

## Town of Sprague Capital Improvements & Road Condition Study

### CLIENT:

**Town of Sprague, Connecticut**

1 Main Street, PO Box 677

Baltic, CT 06330

### Reference:

Catherine Osten, First Selectman

860.822.3000 x202

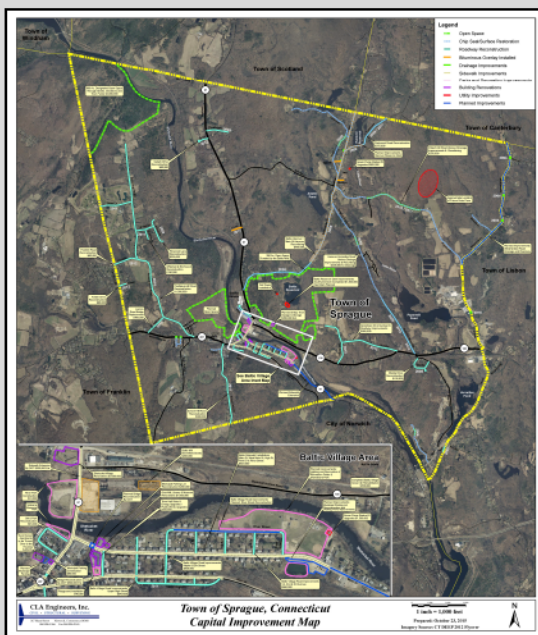
[firstselectman@ctsprague.org](mailto:firstselectman@ctsprague.org)

### SERVICE PERIOD:

- 2008 to Present

### SERVICES PROVIDED:

- Town Road Pavement Condition Study
- Surveying
- Local Permitting
- Construction Drawings & Specifications
- Construction Administration & Inspection
- GIS Mapping
- Grant Coordination



### DESCRIPTION:

CLA Engineers, Inc. has provided on-call services to the Town of Sprague for the past 7 years. During this time, CLA has provided a variety of engineering, design, and construction services. CLA has assisted the Town in numerous road, sidewalk, storm drainage, and bridge capital improvements. Additionally, CLA has prepared a Town road pavement condition study to aid in future planning and budgeting.

### ROAD CONDITION STUDY:

CLA has provided the Town with a comprehensive Town road pavement condition study. Over 14 miles of Town road were visually inspected for various forms of distress and rated based on age and level of deterioration. CLA provided recommendations for pavement preservation measures and future improvements. Short term, long term and routine maintenance budgets were provided for future planning. A Town-wide GIS map was compiled outlining the road conditions and locations.

### DESIGN SERVICES:

CLA has provided planning, design, construction administration and inspection for various roadway and capital improvement projects including the following examples:

- Grandview & Sunrise Drive Road Improvements: The full depth reclamation and repaving of approximately 1.1 mile of Town roads with associated drainage improvements (2015, \$900,000)
- Baltic Village Road Improvements: The multiphase reconstruction of several roads within the Baltic Village area with new concrete sidewalks and permeable interlocking concrete pavers (2010 to present, \$1.7 million to date)
- Lacroix Road Bridge Replacement: The replacement of the closed Lacroix Road Bridge with associated road reconstruction utilizing State of CT Local Bridge Funding (2012, \$400,000)

