

## PFIZER FUEL CELL PROJECT GROTON, CT

### CLIENT:

A/Z Corporation

46 Norwich-Westerly Road  
North Stonington, CT 06359

### Reference:

Rene Martinez, P.E.

860-367-4980

[rmartinez@a-zcorp.com](mailto:rmartinez@a-zcorp.com)

### PROJECT HIGHLIGHTS:

**Location:** Groton, Connecticut

**Project:** The installation of two Fuel Cell Energy fuel cell power plants on the Pfizer campus

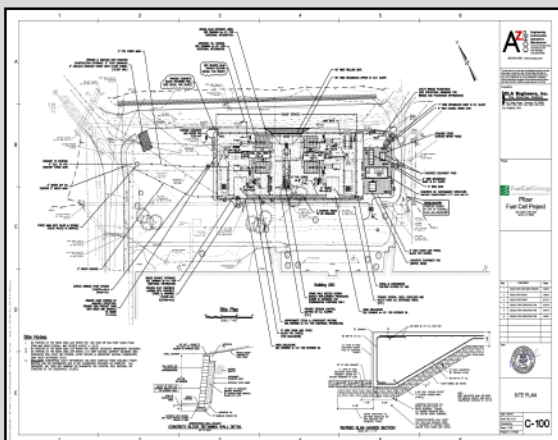
**Size:** 5.8 Mw total

**Status:** Completed in 2016

**Total Project Cost:** \$ \_\_\_\_\_ ±

### SERVICES PROVIDED:

- Topographic Survey
- Wetland Delineation
- Conceptual Planning & Coordination
- Structural Design
- Site & Utility Design
- Construction Drawings



### DESCRIPTION:

CLA Engineers, Inc. provided topographic survey, site soils investigations, inland wetlands delineation, civil & structural design and engineering services for two new Fuel Cell Energy DFC3000 fuel cell power plants on the Pfizer campus in Groton, Connecticut. The project included locating and designing an approximately 180'x74' reinforced concrete pad to support the fuel cell units, designing a utility bridge, site grading and layout, and coordinating the utility interconnects to the existing Pfizer systems.

Conceptual general arrangement site layouts were issued for review and coordination with the multiple stakeholders'. Final civil and structural construction drawings were provided incorporating the site layout, grading, utility connections, structural requirements, and details. Provided on call design adjustments and plans during construction to work with unforeseen field conditions.

